

THIS DRAWING IS UNPUBLISHED. RELEASED FOR PUBLICATION  
 © COPYRIGHT BY TYCO ELECTRONICS CORPORATION. ALL RIGHTS RESERVED.

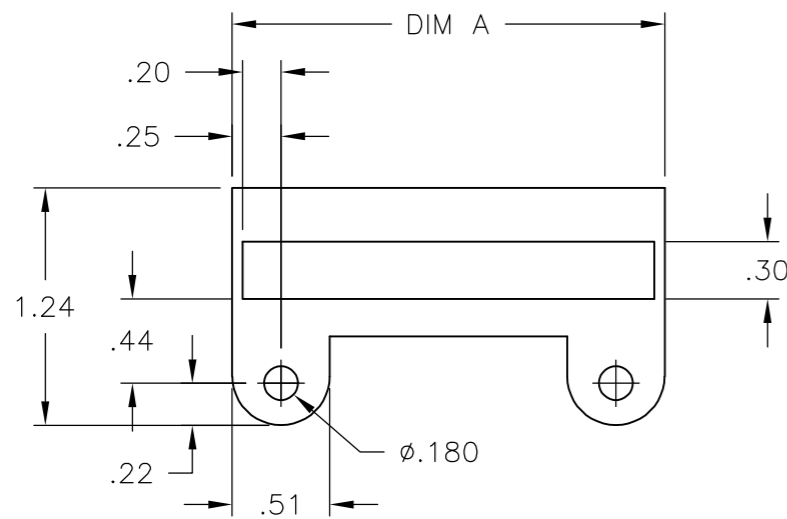
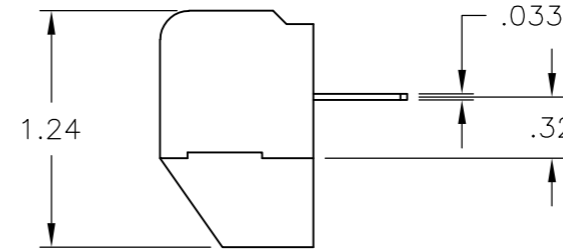
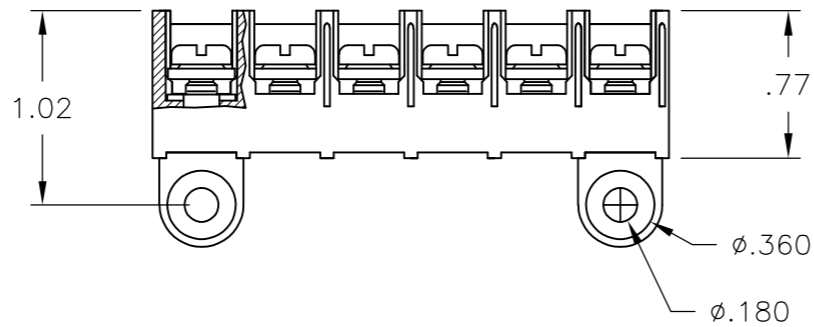
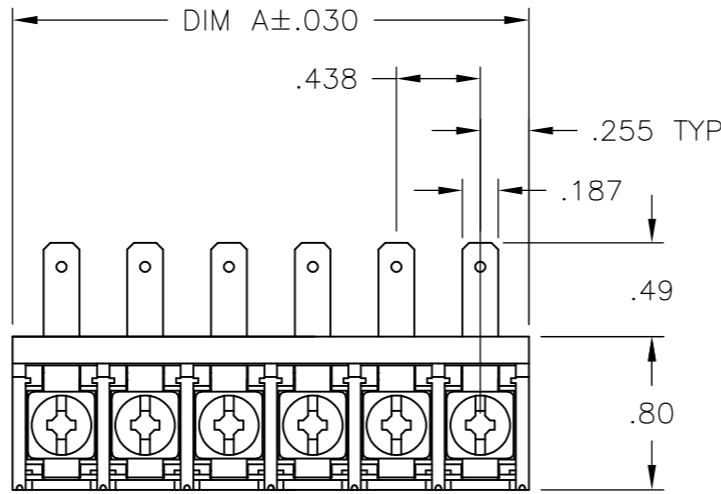
| LOC | DIST | REVISIONS |     |                           |         |     |      |
|-----|------|-----------|-----|---------------------------|---------|-----|------|
| FT  | 0    | P         | LTR | DESCRIPTION               | DATE    | DWN | APVD |
|     |      |           | E   | REVISED PER ECO-08-010814 | 15MAY08 | HMR | MZ   |

**MATERIAL:**  
 HOUSING: THERMOPLASTIC, UL94V-0, BLACK.  
 TERMINAL: BRIGHT TIN PLATED COPPER ALLOY.  
 SCREW: 8-32, ZINC PLATED STEEL.

**ELECTRICAL:**  
 CURRENT RATING: 30A  
 VOLTAGE RATING: 600V  
 WIRE RANGE: 10-18 AWG (UL)  
 10-22 AWG (CSA)

**MECHANICAL:**  
 RECOMMENDED TORQUE: 20 IN-LB.  
 OPERATING TEMP.: -40°C TO +120°C.

- 1 INK MARKED APPROX AS SHOWN.
- 2 BOTTOM SCREWS.
- 3 OBSOLETE PART NUMBER.



RECOMMENDED PANEL LAYOUT

| 8.823 | 20        | 8QCR-20-006    | 2-1546587-0 |
|-------|-----------|----------------|-------------|
| 8.385 | 19        | 8QCR-19-006    | 1-1546587-9 |
| 7.948 | 18        | 8QCR-18-006    | 1-1546587-8 |
| 7.510 | 17        | 8QCR-17-006    | 1-1546587-7 |
| 7.073 | 16        | 8QCR-16-006    | 1-1546587-6 |
| 6.635 | 15        | 8QCR-15-006    | 1-1546587-5 |
| 6.198 | 14        | 8QCR-14-006    | 1-1546587-4 |
| 5.760 | 13        | 8QCR-13-006    | 1-1546587-3 |
| 5.323 | 12        | 8QCR-12-006    | 1-1546587-2 |
| 4.885 | 11        | 8QCR-11-006    | 1-1546587-1 |
| 4.448 | 10        | 8QCR-10-006    | 1-1546587-0 |
| 4.010 | 9         | 8QCR-09-006    | 1546587-9   |
| 3.573 | 8         | 8QCR-08-006    | 1546587-8   |
| 3.135 | 7         | 8QCR-07-006    | 1546587-7   |
| 2.698 | 6         | 8QCR-06-006    | 1437659-6   |
| 2.260 | 5         | 8QCR-05-006    | 9-1546159-2 |
| 1.823 | 4         | 8QCR-04-661    | 2-1546587-1 |
| 1.823 | 4         | 8QCR-04-527    | 9-1546159-1 |
| 1.823 | 4         | 8QCR-04-006    | 9-1437658-5 |
| 1.385 | 3         | 8QCR-03-006    | 8-1546159-9 |
| 2.260 | 2         | 8QCR-02-302    | 8-1546159-8 |
| .948  | 2         | 8QCR-02-006    | 1546587-2   |
| DIM A | NO OF POS | CATALOG NUMBER | TE PART NO  |

SEE FIGURE 3  
 SEE FIGURE 3

SEE FIGURE 3

|  |  |                        |   |                 |
|--|--|------------------------|---|-----------------|
| THIS DRAWING IS A CONTROLLED DOCUMENT.   |  | DWN S SCHLEGEL 6/25/04 | Tyco Electronics Corporation<br>Harrisburg, Pa 17105-3608 |                 |
| DIMENSIONS: INCHES   |  | CHK S YODER 6/25/04    |   |                 |
| TOLERANCES UNLESS OTHERWISE SPECIFIED:   |  | APVD S YODER 6/25/04   | NAME  |                 |
| 0 PLC ± -<br>1 PLC ± -<br>2 PLC ± .02<br>3 PLC ± .010<br>4 PLC ± -<br>ANGLES ± - |  | PRODUCT SPEC -         | 8QCR-XX-006 ASSEMBLY                                      |                 |
| MATERIAL -   |  | FINISH -               | APPLICATION SPEC -  | RESTRICTED TO - |
|  |  | WEIGHT -               | SIZE A3   | CAGE CODE 00779 |
|  |  | CUSTOMER DRAWING       | DRAWING NO C-1437659-6                                    | REV E           |
|  |  | SCALE NTS              | SHEET 1 OF 2  |                 |

4

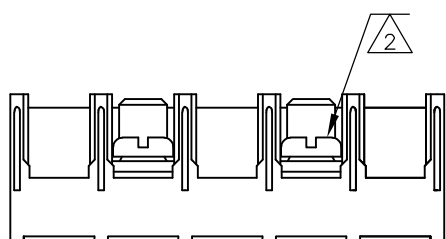
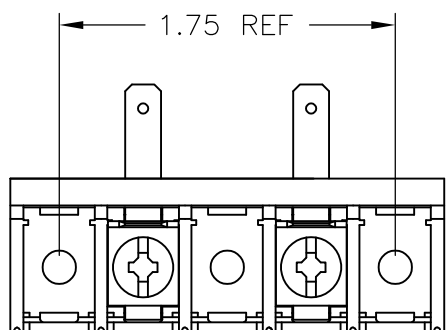
3

2

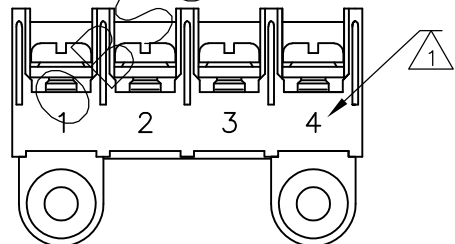
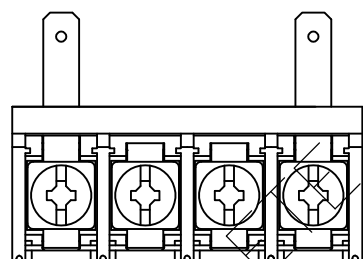
1

THIS DRAWING IS UNPUBLISHED. RELEASED FOR PUBLICATION  
© COPYRIGHT - BY TYCO ELECTRONICS CORPORATION. ALL RIGHTS RESERVED.

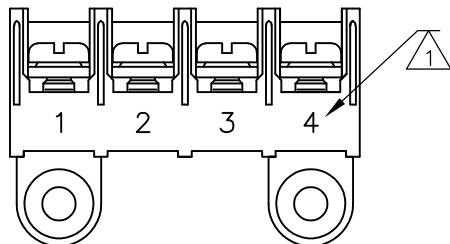
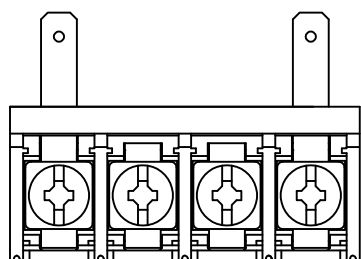
|     |      |           |     |             |      |     |      |
|-----|------|-----------|-----|-------------|------|-----|------|
| LOC | DIST | REVISIONS |     |             |      |     |      |
| FT  | 0    | P         | LTR | DESCRIPTION | DATE | DWN | APVD |
|     |      | -         |     | SEE SHEET 1 | -    | -   | -    |



8-1546159-8



9-1546159-1



2-1546587-1

|  |  |                  |            |         |   |                  |           |             |               |       |    |     |
|--|--|------------------|------------|---------|---|------------------|-----------|-------------|---------------|-------|----|-----|
| THIS DRAWING IS A CONTROLLED DOCUMENT.   |  | DWN              | S SCHLEGEL | 6/25/04 | Tyco Electronics Corporation<br>Harrisburg, Pa 17105-3608 |                  |           |             |               |       |    |     |
| DIMENSIONS:<br>INCHES  |  | CHK              | S YODER    | 6/25/04 |   |                  |           | NAME        |               |       |    |     |
| TOLERANCES UNLESS OTHERWISE SPECIFIED:   |  | APVD             | S YODER    | 6/25/04 | 8QCR-XX-006 ASSEMBLY                                      |                  |           |             |               |       |    |     |
|  |  | PRODUCT SPEC     |            | SIZE    |   |                  | CAGE CODE | DRAWING NO  | RESTRICTED TO |       |    |     |
| 0 PLC ± -<br>1 PLC ± -<br>2 PLC ± .02<br>3 PLC ± .010<br>4 PLC ± -<br>ANGLES ± - |  | APPLICATION SPEC |            | A3      |   |                  | 00779     | C-1437659-6 | -             |       |    |     |
| MATERIAL   |  | FINISH           |            | WEIGHT  |   | CUSTOMER DRAWING |           |             | SCALE         | SHEET | OF | REV |
| -  |  | -                |            | -       |   | NTS              |           |             | 2             | 2     | E  |     |